



FILTER





Tube To Tube Sheet Joint

The New Field Industries (as Shown in Figure 1) are designed to remove entrained liquids from a gas stream. The minute liquid droplets ($0.3\mu-10\mu$) in the gas stream are coalesced (as shown in Figure 2) in the high efficiency coalescing elements into large droplets which drain off the outside surface of the elements. Any large liquid droplets ($>10\mu$) will gravity out in the lower sump. The vertical gas coalescers have a removal efficiency of 99.99+% by weight of all liquid down to 0.3 microns.

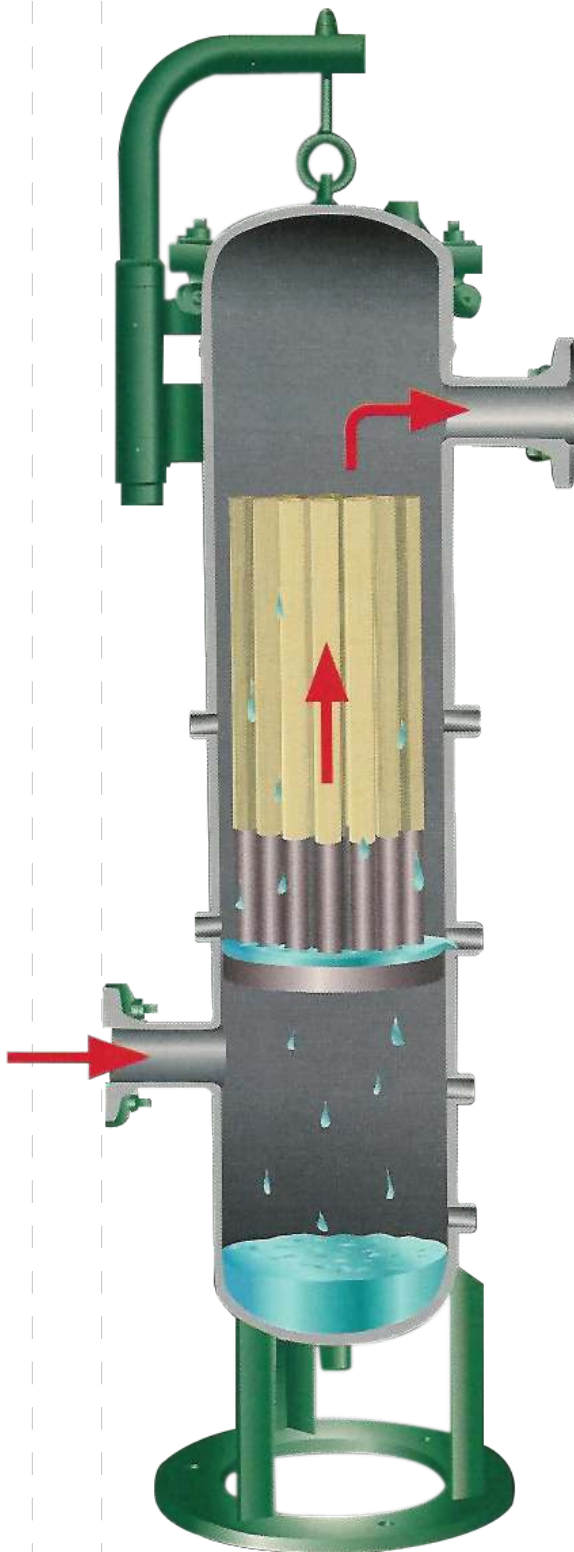


Figure 1

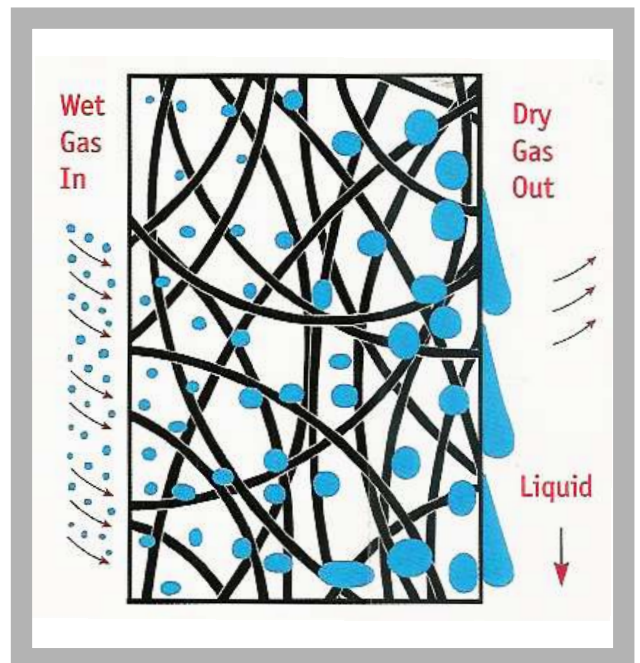


Figure 2

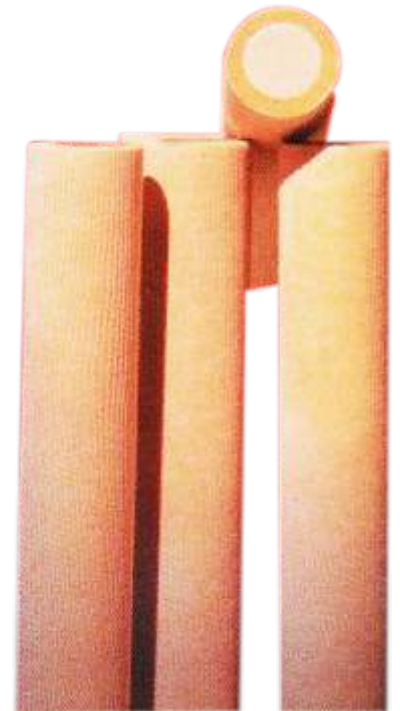




Tube To Tube Sheet Joint

The Coalescer elements manufactured by Southwest Filter Company are Designed specifically to remove minute liquid droplets from a gas stream. The elements are designed for high efficiency and constructed from the smallest diameter micro fibers available. This special construction enables our elements to offer removal efficiencies of 99.99% down to 0.3 Microns. Additionally, the coalescer elements are manufactured with a graded density to yield the maximum service life.

An added feature of the coalesce elements is that no gaskets, bolts, springs or nuts are required for sealing. The elements are self sealing and, therefore, time required for element change out is greatly reduced. The coalesce elements have no metal components, thereby making disposal less costly.



APPLICATIONS

Typical applications for the southwest Filter Company Vertical Gas Coalescers:

- » Gas pipelines to remove liquid condensate
- » Upstream of compressors and turbines to remove liquids and solids to prevent damage to expensive equipment.
- » Downstream of compressors to remove compressor lube oil from the gas
- » Upstream of gas metering stations to ensure correct measuring.
- » Fuel gas applications to prevent damage to compressors
- » Enhanced oil recovery to reduce formation damage from entrained liquids and solids in the gas.



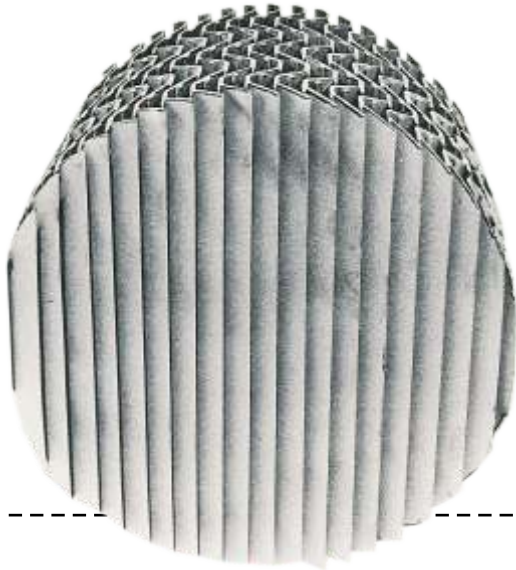
Other Products by New Field Company...

- » Gas Filter /Separators
- » Liquid/Liquid Coalescers
- » Fuel Gas Filtration Skids
- » Gas Filters
- » Liquid Filters
- » Activated Carbon Filters
- » Amine/Glycol Filters
- » Production Separators
- » Test Separators

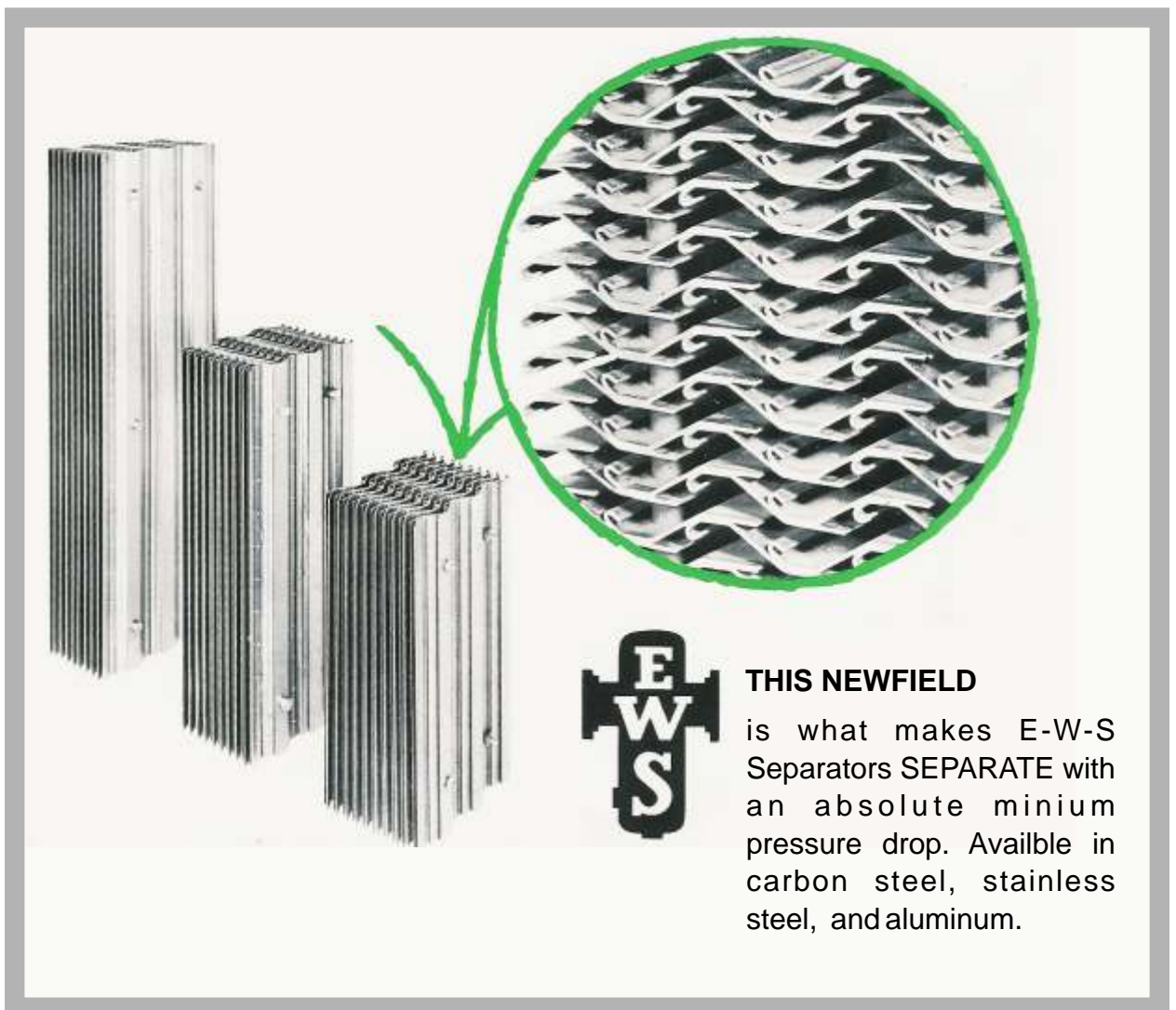
**Contact Factory For
Additional information.**



E-W-S Vane TYPE MIST EXTRACTING UNIT



E-W-S Vane TYPE Mist Extracting Units are furnished with removable or non-removable vanes, designed for installation during fabrication or through the manway of an existing vessel, furnished in carbon or stainless steel.



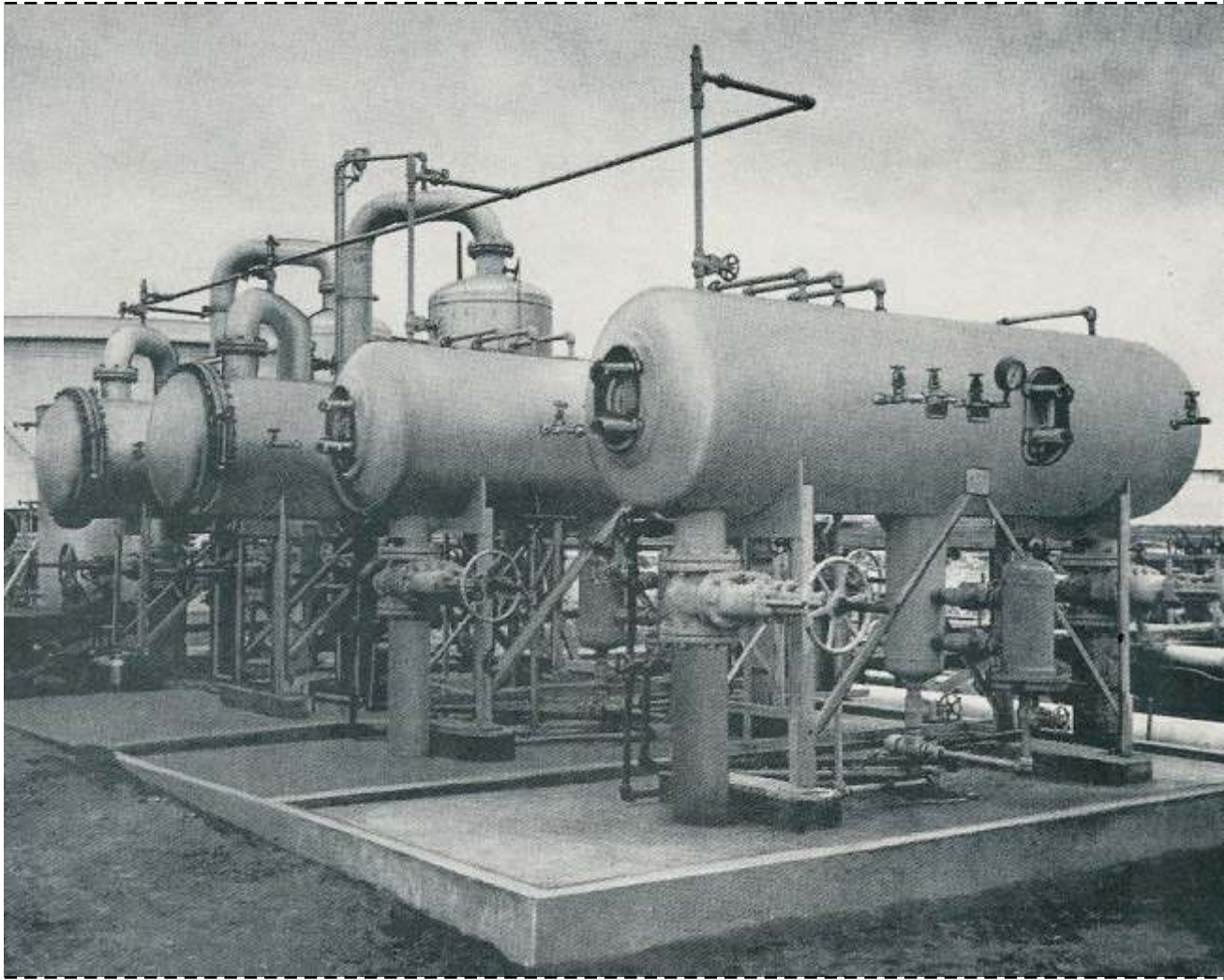
THIS NEWFIELD

is what makes E-W-S Separators **SEPARATE** with an absolute minimum pressure drop. Available in carbon steel, stainless steel, and aluminum.

Filters, Separators & Coalescers*

For Finished Petroleum Liquids, Gases, Air and Water.

Featuring moulded, tubular fiber Glass Filter Elements That require no cumbersome gaskets, threads or springs.



THIS NEWFIELD

Four model 363-C Filter / Separators installed at a large south Texas refinery for removing solids water "cloud" from diesel furnace oil and other finished products, being delivered to pipeline .

Two units are old style with full-face flanges for making element changes, and two are new style, with quick-opening elliptical flanges on one side and one end for making an element change.

*Patented



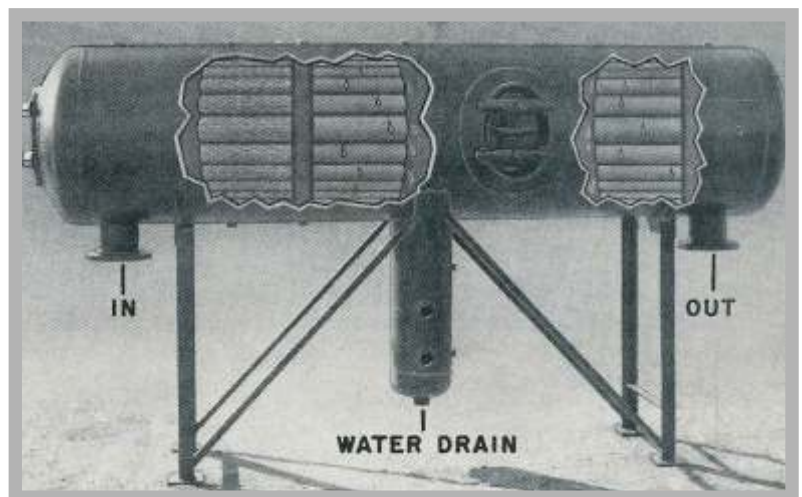


Filtration and Complete Free Water Removal From Finished Products



Model 302-C Filter/Separator two-stage Unit, 150# ASME code stamped, for removing solids and water from 500 GPM of kerosene at pipeline terminal. Unit employs fiber glass filter elements and fiber glass water coalescing elements. Quick –opening elliptical flanges for making element changes. Entry into unit not required. Unit also equipped with automatic air eliminator.

Model 303 Filter/Separator three – stage unit, 150# ASME code stamped, for removing solids and water from 600 GPM of diesel at loading rack/ Third-stage hydrophobic separator elements assure complete water removal and are required for diesel and heavier products.

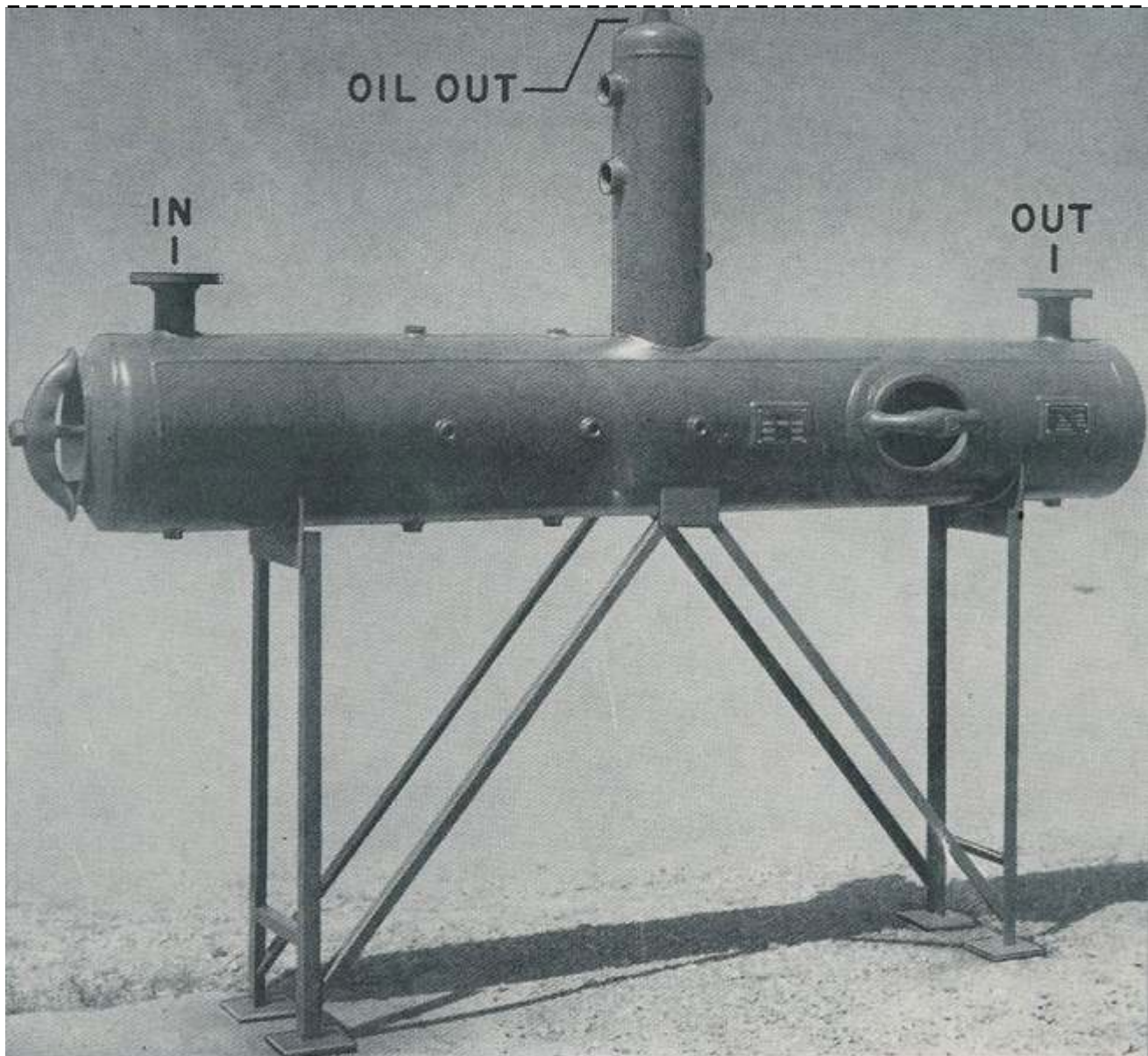


Fiber Glass Filter Elements With a Greatly increased surface area, giving long element life, Easy to change, too ---- just pull off the old Elements and shove on new ones.



REMOVAL OF SMALL QUANTITIES OF OIL FROM WATER

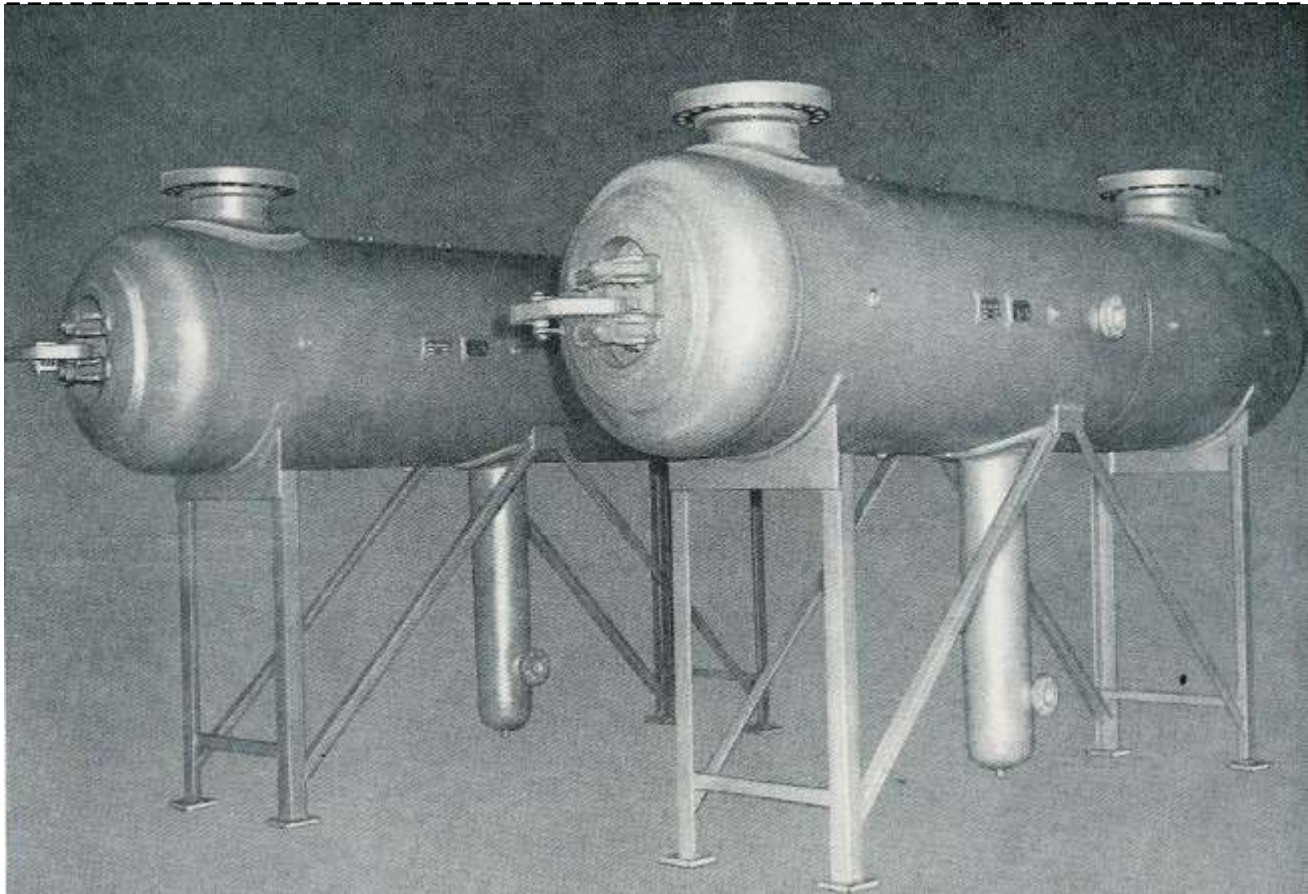
All Units can be equipped with automatic oil dump valve, air eliminator dump heater discharge control valve and liquid level gage.



Model 162-WC Filter/ Separator installed at a west Texas chemical plant for removing small quantities of entrained oil from 77 GPM of steam condensate. Unit equipped with one-bolt, quick-opening elliptical flanges for changing elements.

COMPLETE REMOVAL OF ENTRAINED LIQUIDS AND SOLIDS FROM GAS

Negligible Pressure drop Through All units



Two model 362-GC Filter/Separators installed at a west Texas plant, 1200# ASME code stamped. Each unit removes traces of heavy distillate 88 MM SCFD of natural gas. Elliptical Manway flanges equipped with hinges for ease in handling.

FILTERS, SEPARATORS AND COALESCERS FOR

REFINERIES

LOADING RACKS

GASOLINE PLANTS

PRODUCTS PIPELINES

POWER PLANTS

CYCLING PLANTS

GAS PIPELINES

CHEMICAL PLANTS

LPG STORAGE SYSTEMS



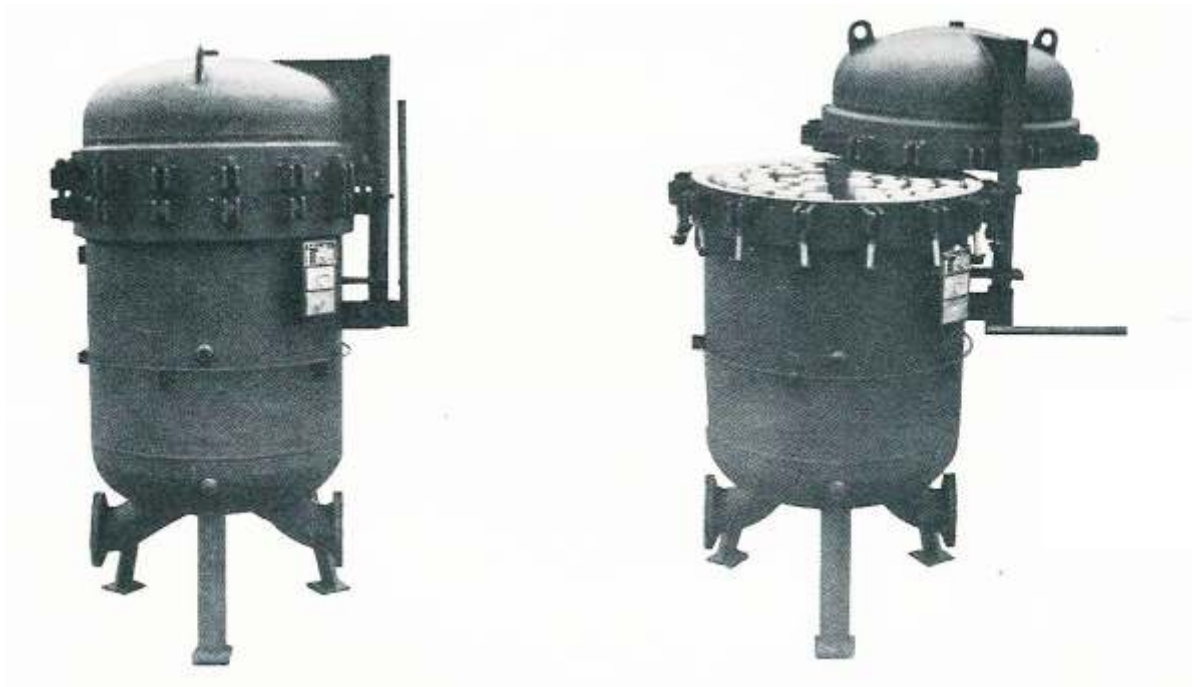
LIQUIDS AND SOLIDS REMOVAL FROM GAS

Interchangeable 1 micron Thru 50 Micron Cartridges





SOLIDS REMOVAL FROM DRY GASES

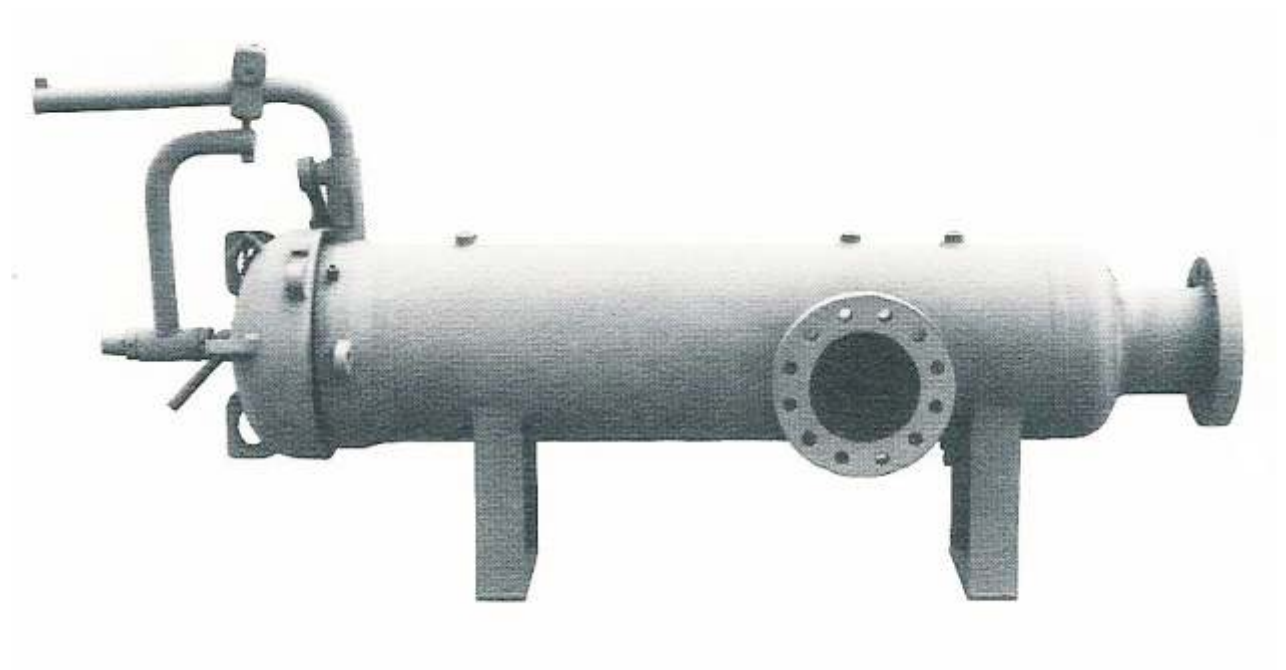


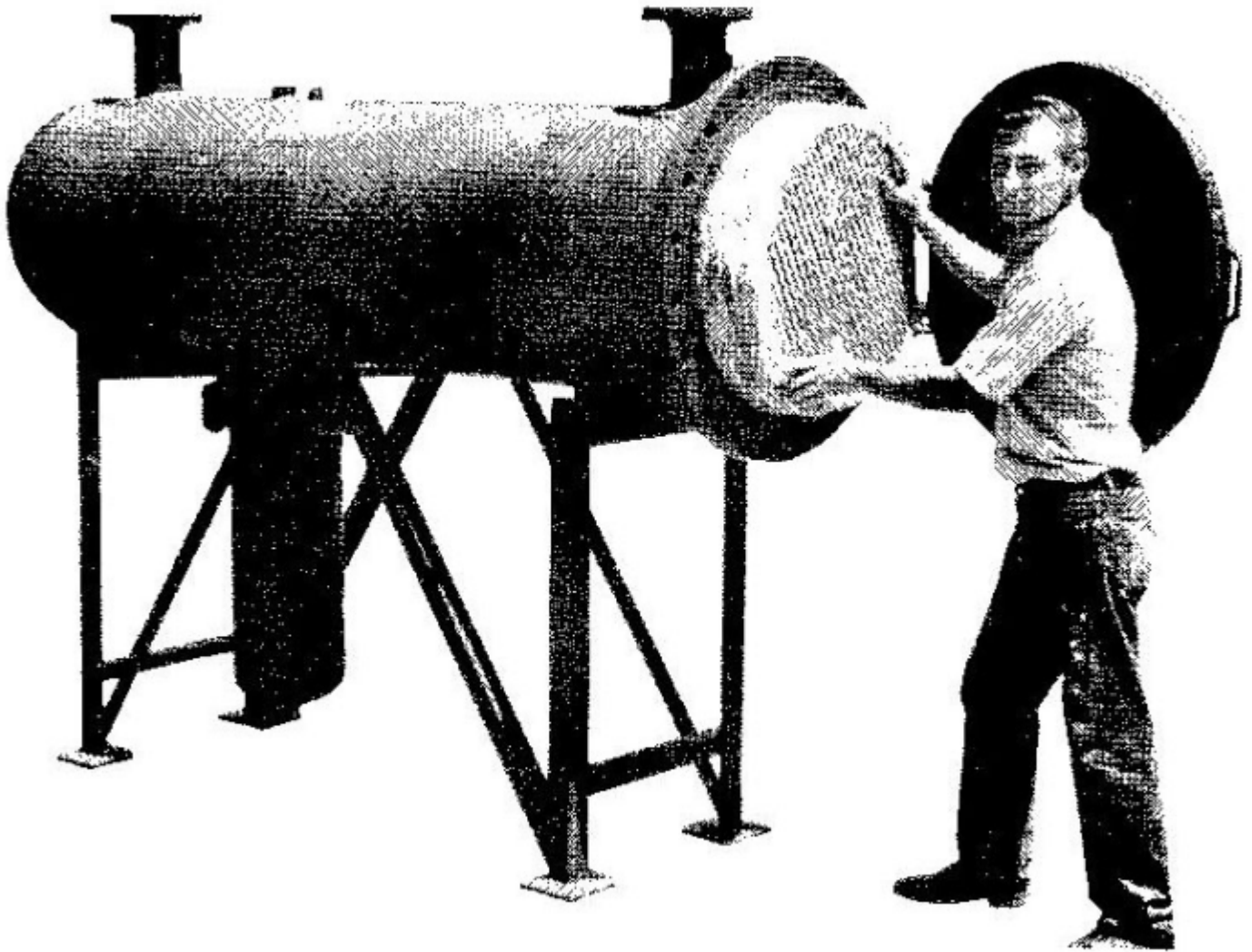
TWO-STAGE VERTICAL FILTER/SEPARATORS



SOLIDS REMOVAL FROM DRY GASES

Interchangeable 1 micron Thru 50 Micron Cartridges

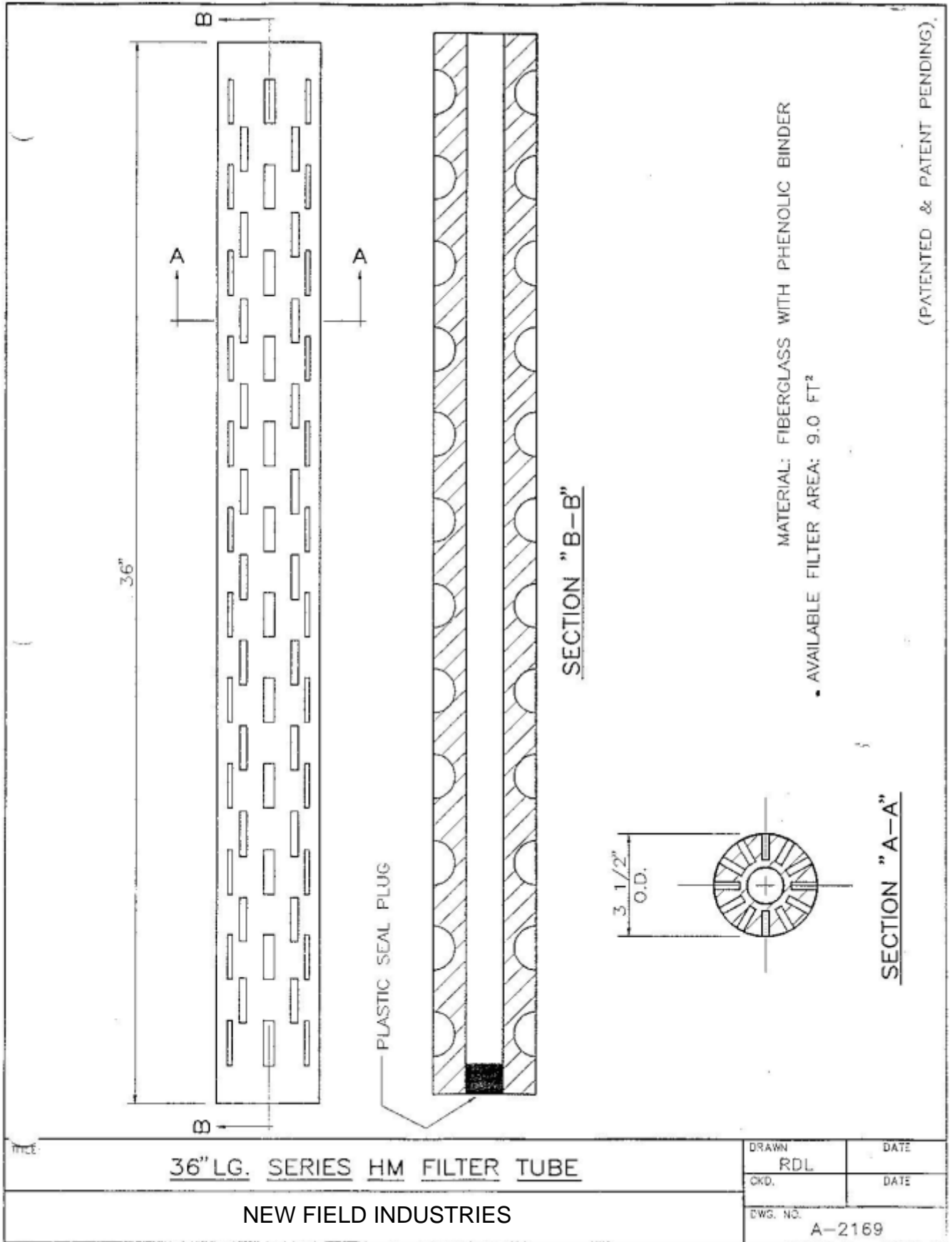




FIBERPACK COALESCERS & STRAINERS FOR PETROLEUM PRODUCTS

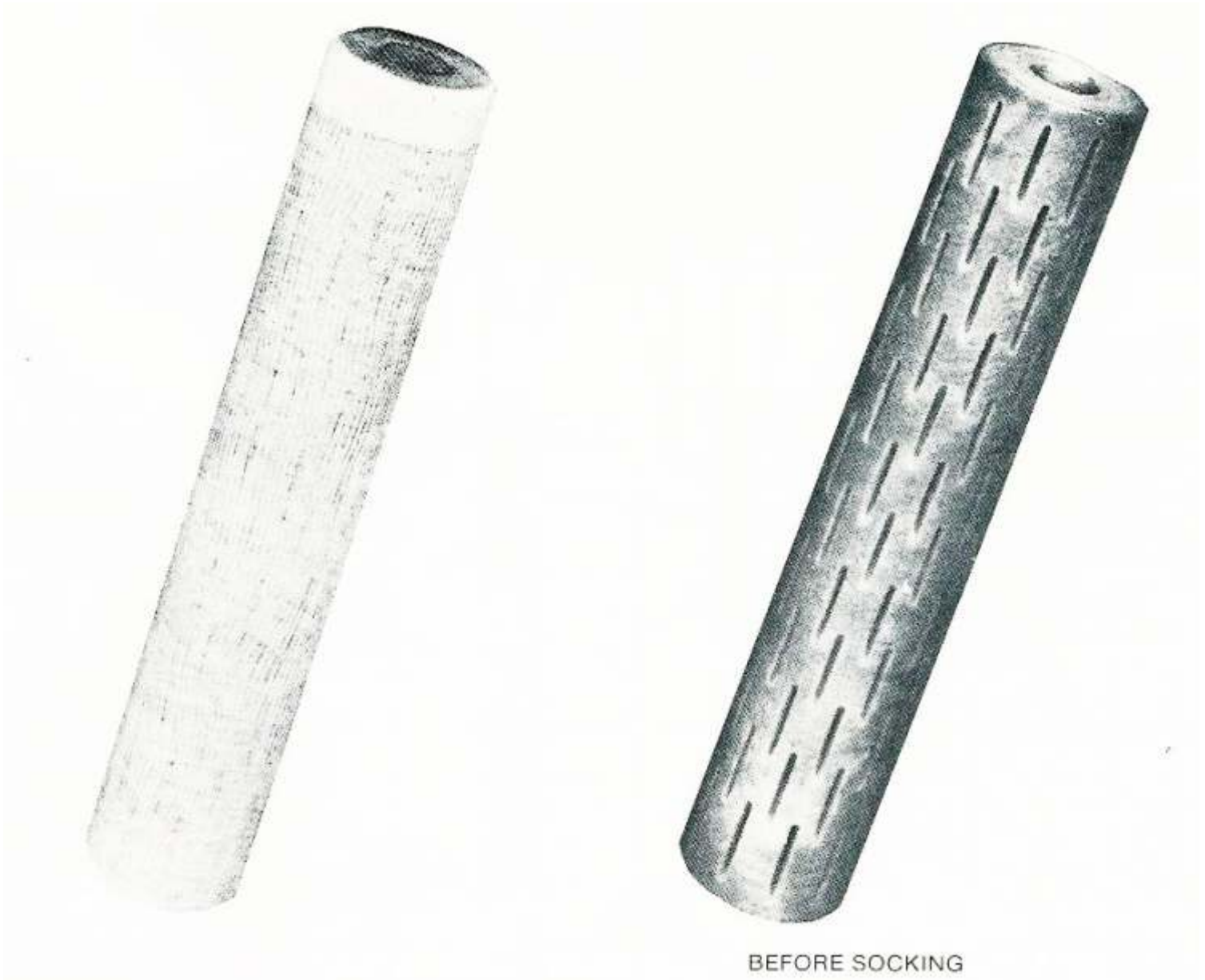
**SIZES AVAILABLE FOR ALL FLOW RATES & PRESSURES
FEATURING PACKS FROM WOOD EXCELSIOR &
POLYPROPYLENE FIBERS (FOR HIGH PH SERVICE).**



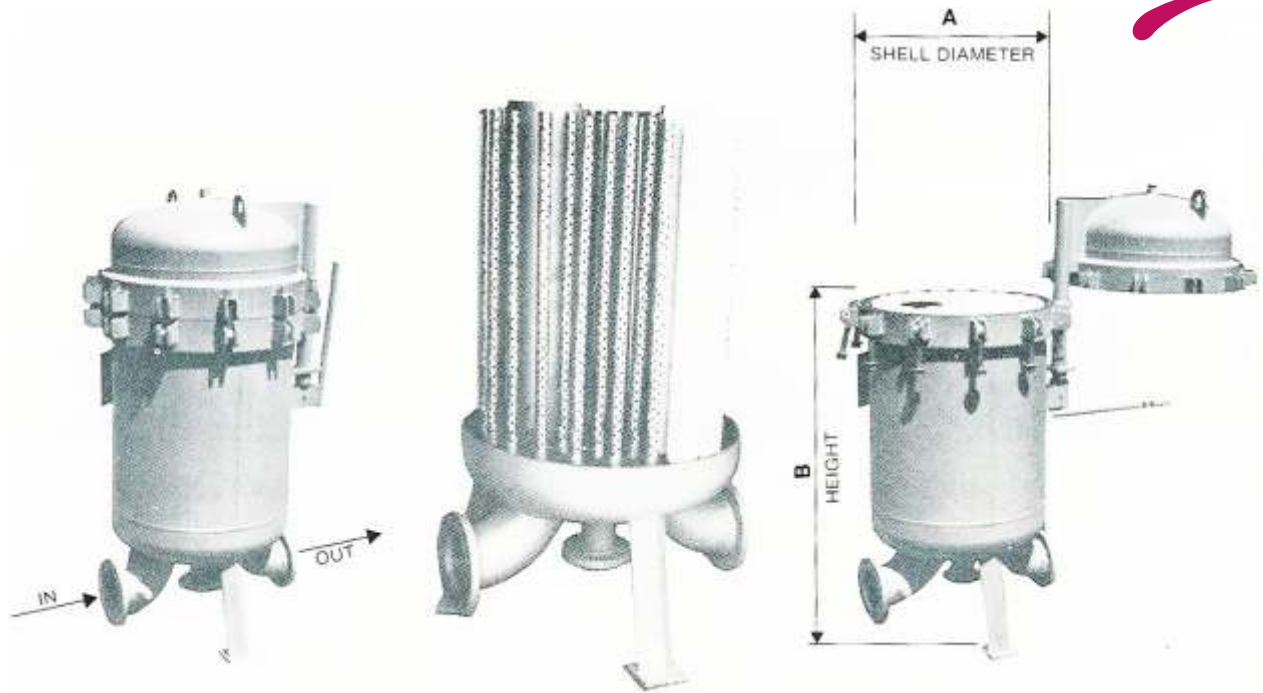




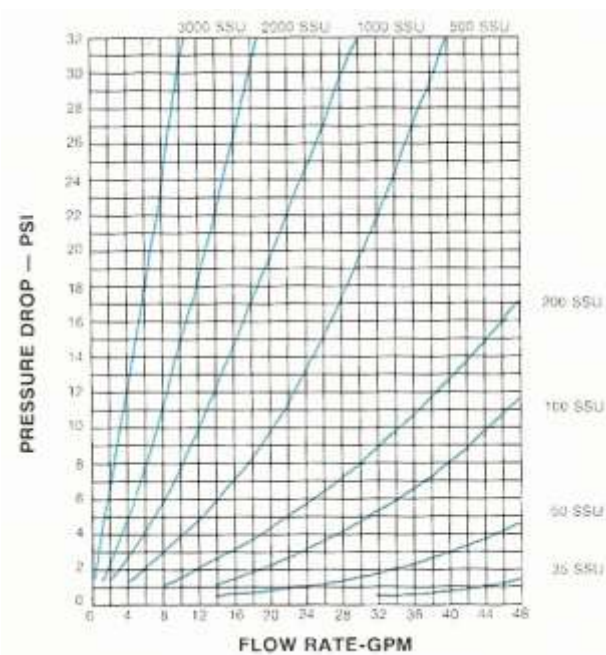
SOCKED FIBERGLASS FILTER TUBES FOR LIQUIDS AND GASES WHICH COMBINE THE ADVANTAGES OF SURFACE AND DEPTH FILTRATION.



BEFORE SOCKING



Typical vertical filter equipped with 36" long filter tubes and swing-bolt closure. Grid assembly welded to inside of top head rests on top of tubes to prevent their becoming unsealed.



FILTER MODEL NO.	NO. OF 36" LONG FILTER TUBES	A	B
101-V	3	10 1/2"	50"
121-V	6	12 1/2"	51"
141-V	7	14"	51"
161-V	9	16"	52"
181-V	14	18"	53"
201-V	16	20"	54"
241-V	23	24"	55"
261-V	27	26"	55"
281-V	30	28"	56"
301-V	41	30"	58"
361-V	60	36"	58"
421-V	80	42"	60"
481-V	105	48"	65"
541-V	130	54"	66"
601-V	160	60"	68"
661-V	180	66"	70"
721-V	220	72"	76"

Pressure Drop vs Flow for 36" Long, 3 Micron Tube

- (Maximum Allowable Pressure Drop – 500 psi)
- (Pressure Drop Slightly Less for Coarser Tubes)
- (Pressure Drop Doubles for 1 Micron Tube)

Typical vertical filter equipped with 36" long filter tubes and swing-bolt closure. Grid assembly welded to inside of top head rests on top of tubes to prevent their becoming unsealed.

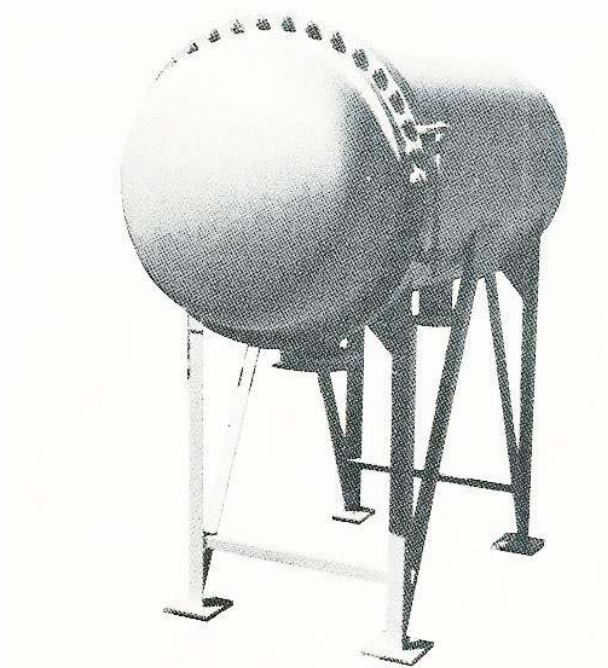


CUSTOM DESIGNS

NEW FIELD



- » ASME Construction
- » Ferrous and Non-ferrous Materials



HORIZONTAL FILTER WITH STANDARD BOLTED COVER FLANGE AND HIGE

The Southwest fiberglass Filter Tube is a moulded Product with a phenolic resin bonding agent The Tube is Suitable for filter any liquid or gas that does not chemically attack the glass or phenolic binder. The standard socking textile is cotton. Other textiles are available if desired.

Partial perforations are ground into the outer surface of the tube to increase the surface area and from solids retention traps, thereby greatly extending the life of the tube. This unique sealing arrangement means that no gaskets, springs or bolts are involved and a tube change-out can made very quickly.

An extremely important advantage of the socked filter tube is the pressure drop it can withstand, up to 500 psi, without rupture or by-pass. This feature eliminates usual problem of premature tube rupture followed by product recontamination and media migration.

Interchangeable 1 micron thru 50 micron tubes available. To change-out filter tubes simply pull out old tubes and shove in new ones. No gaskets, bolts or springs involved.



NEW FIELD INDL. EQUIP. PVT. LTD. Ph: (91-265)-2361834
Mfgr. Steam Jet Ejector & Process Equipments (91-265)-2362921

Office: 702, Yashkamal, Syajigunj, Baroda-390 005.
www.newfield.co.in

Fax: (91-265)-2361235
Email: sumul@newfield.co.in